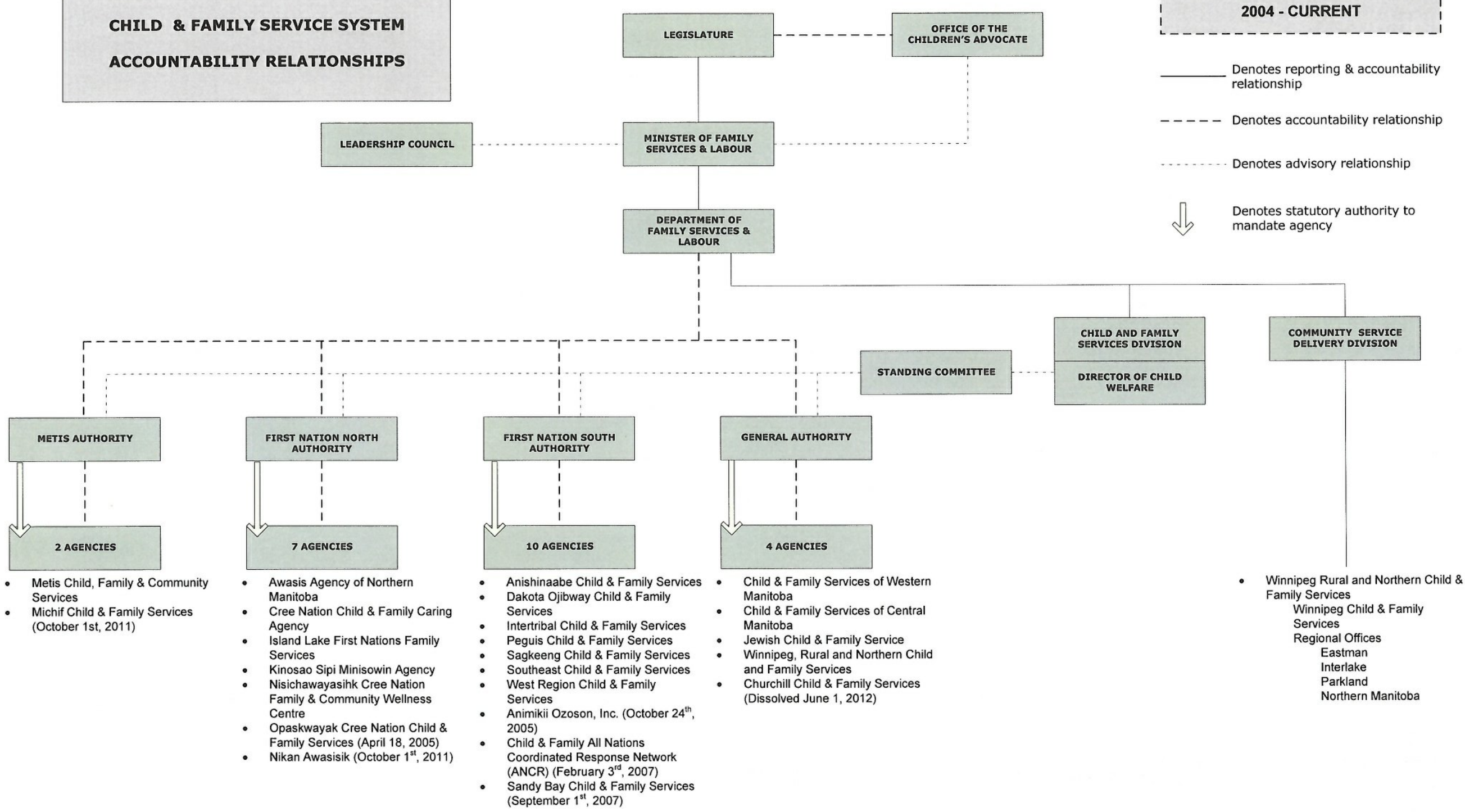


# CHILD & FAMILY SERVICE SYSTEM ACCOUNTABILITY RELATIONSHIPS

**2004 - CURRENT**

————— Denotes reporting & accountability relationship  
 - - - - - Denotes accountability relationship  
 ······ Denotes advisory relationship  
 ↓ Denotes statutory authority to mandate agency



**METIS AUTHORITY**

**2 AGENCIES**

- Metis Child, Family & Community Services
- Michif Child & Family Services (October 1st, 2011)

**FIRST NATION NORTH AUTHORITY**

**7 AGENCIES**

- Awasis Agency of Northern Manitoba
- Cree Nation Child & Family Caring Agency
- Island Lake First Nations Family Services
- Kinosao Sipi Minisowin Agency
- Nisichawayasihk Cree Nation Family & Community Wellness Centre
- Opaskwayak Cree Nation Child & Family Services (April 18, 2005)
- Nikan Awasisik (October 1<sup>st</sup>, 2011)

**FIRST NATION SOUTH AUTHORITY**

**10 AGENCIES**

- Anishinaabe Child & Family Services
- Dakota Ojibway Child & Family Services
- Intertribal Child & Family Services
- Peguis Child & Family Services
- Sagkeeng Child & Family Services
- Southeast Child & Family Services
- West Region Child & Family Services
- Animikii Ozoson, Inc. (October 24<sup>th</sup>, 2005)
- Child & Family All Nations Coordinated Response Network (ANCR) (February 3<sup>rd</sup>, 2007)
- Sandy Bay Child & Family Services (September 1<sup>st</sup>, 2007)

**GENERAL AUTHORITY**

**4 AGENCIES**

- Child & Family Services of Western Manitoba
- Child & Family Services of Central Manitoba
- Jewish Child & Family Service
- Winnipeg, Rural and Northern Child and Family Services
- Churchill Child & Family Services (Dissolved June 1, 2012)

**STANDING COMMITTEE**

**CHILD AND FAMILY SERVICES DIVISION**

**DIRECTOR OF CHILD WELFARE**

**COMMUNITY SERVICE DELIVERY DIVISION**

- Winnipeg Rural and Northern Child & Family Services
- Winnipeg Child & Family Services
- Regional Offices
- Eastman
- Interlake
- Parkland
- Northern Manitoba